

The STRI Study

Mowing is the single most important maintenance procedure that is conducted on amenity turf. With this in mind it follows that the mowers used should be kept in good order. A well-serviced mower will have a longer, healthier life and a mower with a sharp cutting unit will produce healthier turf.

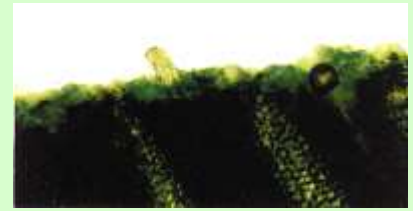
A recent **Sports Turf Research Institute (STRI)** trial found that 'Cleanness of cut' can have a dramatic effect on turf health. Turf cut with a blunt mower will have a reduced resistance to stresses such as drought, cold, wear from play and turf disease. The visual quality of the turf will also suffer. Badly cut turf displays a white sheen. On close inspection this is 'ripped' or 'ragged' leaf blades. Rather than being cut cleanly the turf has been 'ripped'.

Grass becomes caught between the cylinder and bottom blade and because the unit is not sharp, the blades are pulled and torn rather than simply being cut on contact. This can be compared to the finished edge on a piece of paper that has been ripped by hand rather than cut with a sharp blade. Playing quality also deteriorates as the health of the turf suffers. Ball roll and bounce are both affected on poor quality turf. In comparison to this a mower with a sharp cutting unit will cut the leaf blades 'cleanly', the turf will look good, be more resistant to the stresses that are imposed on it and maintain good playing quality.



"The results of the trial showed that the non-lapped method of mower maintenance provided a cleaner cut, improved visual appearance and increased tolerance to disease. In conclusion, our study found that running mowers using the 'non contact' method of setting up the cutting units and using grinding to maintain sharpness was an improvement on the 'backlapping' method."

Mark Ferguson, Sports Turf Research Institute (STRI)



Scythe Cut



Scissor Cut

Photos of 75 X magnified microscope views illustrate differences between scythe cut grass, produced by the Express Dual and Anglemaster sharpening system – compared to normal grass blade finish resulting from cutting with lapped blades producing a scissor cut. Golf courses depend upon appearance.

